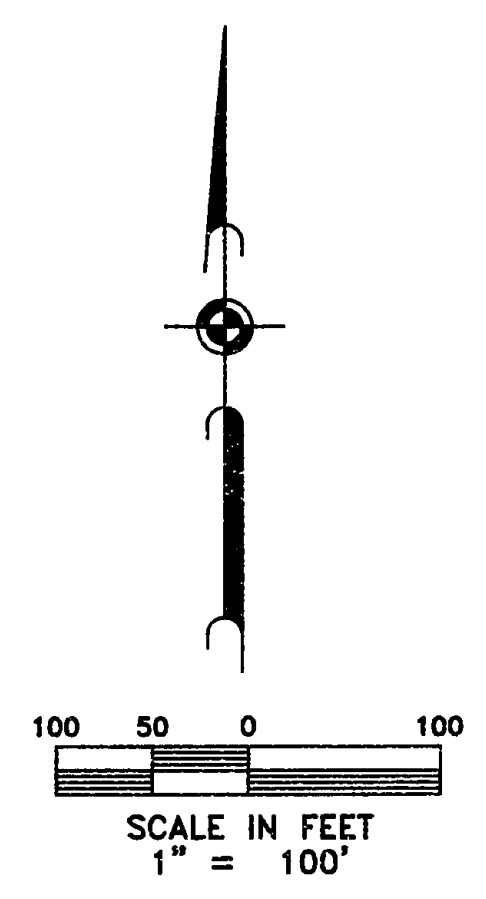


VICINITY MAP NOT TO SCALE



LOT	BLOCK	SQ. FT.	ACRES
1	A	5985	0.137
2	A	5587	0.128
3	A	5587	0.128
4	A	5587	0.128
5	A	5587	0.128
6	A	5587	0.128
7	A	5587	0.128
8	A	5587	0.128
9	A	5587	0.128
10	A	5587	0.128
11	A	5510	0.126
12	A	5510	0.126
13	A	5500	0.126
14	A	5525	0.127
15	A	5811	0.133
16	A	6410	0.147
17	A	9193	0.211
18	A	7135	0.164
19	A	8596	0.197
1	B	6070	0.139
2	B	5917	0.135
3	B	5686	0.131
4	B	5598	0.129
5	B	5577	0.126
6	B	5623	0.129
7	B	5735	0.132
8	B	5915	0.136
9	B	6162	0.141
10	B	6479	0.149
11	B	8730	0.200
12	B	5577	0.126
13	B	7059	0.162
14	B	6315	0.145
15	B	5620	0.129
16	B	5500	0.126
17	B	5500	0.126
18	B	5500	0.126

LOT	BLOCK	SQ. FT.	ACRES
19	B	5500	0.126
20	B	5662	0.130
21	B	5580	0.130
22	B	6037	0.139
1	C	7134	0.164
2	C	6210	0.143
3	C	6107	0.140
4	C	5929	0.136
5	C	5624	0.134
6	C	5702	0.131
7	C	3526	0.127
8	C	5526	0.127
9	C	5557	0.128
10	C	5588	0.128
11	C	5710	0.131
12	C	6584	0.151
13	C	6551	0.150
14	D	8042	0.186
1	D	5451	0.125
2	D	10488	0.240
3	D	8172	0.188
4	D	5960	0.137
5	D	5849	0.134
6	D	7527	0.173
7	F	6093	0.140
8	F	6322	0.145
9	F	6553	0.150
10	F	7475	0.171
11	F	6700	0.200
12	F	5501	0.126
13	F	7114	0.163
14	F	7186	0.165
15	F	7380	0.169
16	F	7682	0.176
17	F	6853	0.153
18	F	6923	0.152
19	F	5550	0.127

LINE	BEARING	DISTANCE
L1	S 74°01'10" E	28.58'
L2	N 61°35'23" E	85.01'
L3	N 16°07'20" E	7.01'
L4	N 59°22'43" E	50.00'
L5	S 73°47'46" E	105.00'
L6	N 61°35'23" E	105.00'
L7	N 28°24'37" W	43.00'
L8	N 31°54'11" W	68.04'
L9	N 32°43'47" W	52.31'
L10	N 34°07'24" W	52.31'
L11	N 50°33'08" E	18.12'
L12	S 39°58'07" E	50.00'
L13	S 50°33'08" W	10.68'
L14	S 28°25'48" E	64.37'
L15	S 40°42'20" E	66.97'
L16	N 49°17'40" E	20.00'
L17	S 40°42'20" E	50.00'
L18	S 49°17'40" W	51.19'
L19	N 79°20'41" E	45.00'
L20	N 49°17'40" E	51.19'
L21	N 25°16'40" W	50.00'
L22	S 47°40'52" E	42.46'
L23	N 17°11'57" E	28.58'
L24	S 72°56'33" E	7.01'
L25	S 34°04'48" W	7.10'
L26	N 16°58'15" E	7.12'
L27	N 56°34'15" W	7.12'
L28	S 02°40'52" E	7.07'
L29	N 73°24'37" W	7.07'
L30	S 16°35'23" W	7.07'
L31	N 11°04'18" E	7.22'
L32	S 88°06'32" W	7.17'
L37	S 59°58'18" E	27.70'
L38	N 04°11'15" E	52.24'
L39	N 00°56'21" W	50.73'
L40	N 45°59'06" E	48.96'
L41	N 10°39'19" W	30.31'
L42	N 10°39'19" W	19.01'
L43	S 61°44'27" W	38.05'
L44	S 42°36'46" W	15.00'
L45	N 79°20'41" E	15.00'
L46	S 28°24'37" E	55.00'
L47	S 28°24'37" E	44.58'
L48	S 21°33'35" E	3.89'
L49	S 21°33'35" E	11.61'

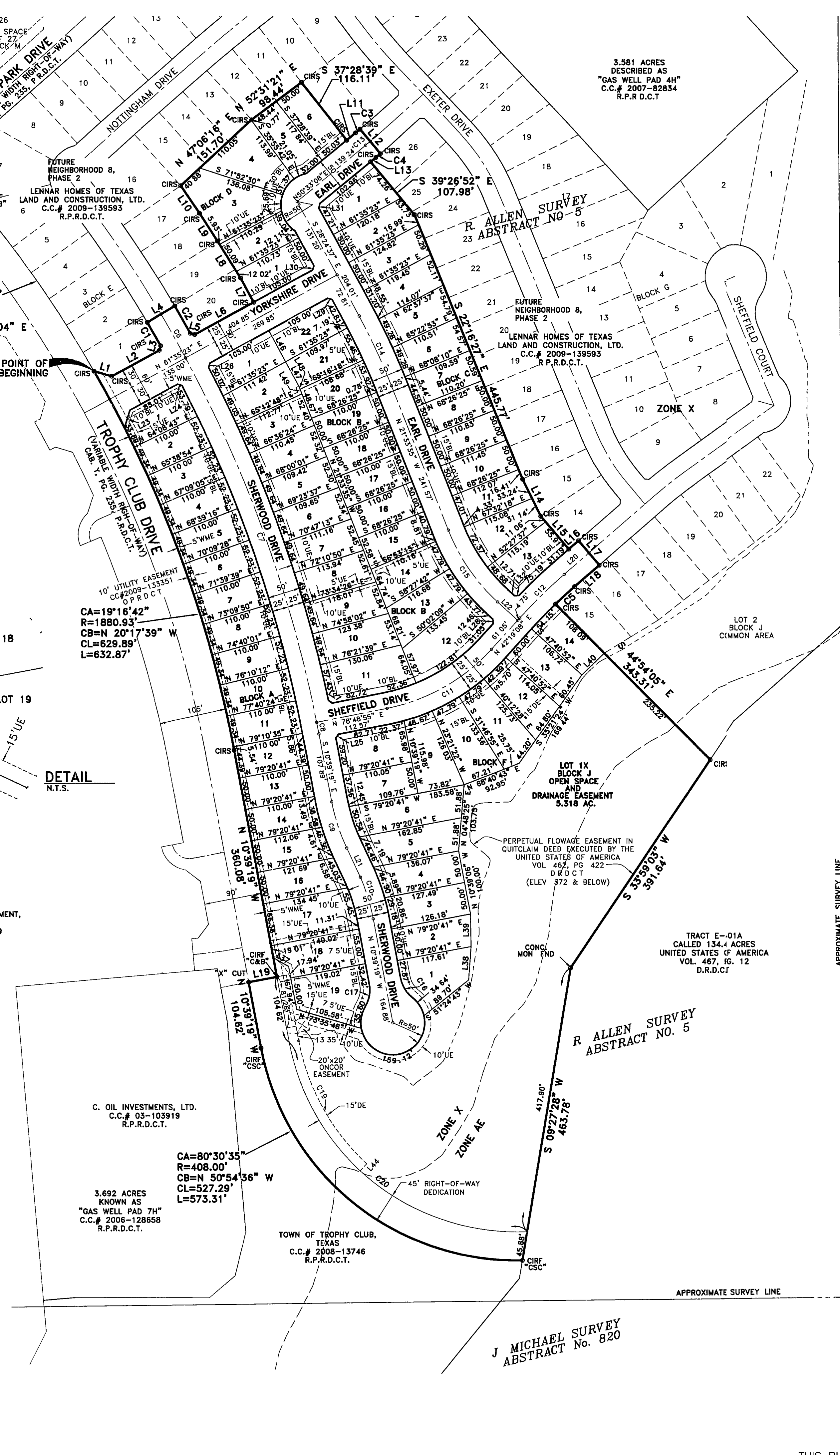
CURVE	CENTRAL ANGLE	RADIUS	ARC LENGTH	CHORD BEARING	CHORD LENGTH
C1	01°12'14"	1990.90'	41.84'	N 30°01'10" W	41.83'
C2	01°22'09"	2040.90'	48.77'	S 29°56'13" E	48.76'
C3	00°31'15"	975.00'	8.86'	N 50°17'30" E	8.86'
C4	00°31'15"	1025.00'	9.32'	S 50°17'30" W	9.32'
C5	02°58'47"	775.00'	40.30'	S 47°48'16" W	40.30'
C6	02°12'40"	2015.93'	77.80'	N 29°30'57" W	77.80'
C7	17°13'31"	2015.93'	608.07'	N 19°47'51" W	603.79'
C8	00°31'42"	2015.93'	18.64'	N 10°55'12" W	18.64'
C9	14°37'21"	300.00'	76.56'	N 17°57'59" W	76.36'
C10	12°59'43"	300.00'	68.04'	N 17°09'10" W	67.90'
C11	36°29'46"	300.00'	191.09'	N 60°34'02" E	187.88'
C12	06°58'31"	800.00'	97.39'	N 45°48'24" E	97.33'
C13	00°31'15"	1000.00'	9.09'	N 50°17'30" E	9.09'
C14	00°51'01"	1000.00'	119.56'	S 24°59'06" E	119.49'
C15	26°07'16"	300.00'	136.77'	S 34°37'13" E	135.59'
C16	41°24'35"	50.00'	36.14'	S 31°21'56" E	35.36'
C17	41°24'35"	50.00'	36.14'	N 10°02'59" E	35.36'
C18	98°55'00"	60.00'	103.59'	S 10°39'19" E	91.19'
C19	38°43'55"	348.00'	223.10'	S 29°01'18" E	213.30'
C20	81°50'42"	363.00'	516.53'	N 51°34'40" W	475.56'

- NOTES:
- REFERENCE BEARING BASIS BEING GRID NORTH, TEXAS STATE PLANE COORDINATES, NORTH CENTRAL ZONE NAD83, (CORSEVE EPOCH DATE 2002), DETERMINED BY GPS OBSERVATIONS ON JULIAN DAY 213, 2006 CALCULATED FROM ARLINGTON RRP2 CORS ARP (PID-DF5387), SAGINAW TX CORS ARP (PID-DH7149) AND DENTON CORS ARP (PID-DF8886).
 - ALL CORNERS ARE MONUMENTED WITH A 5/8" IRON ROD WITH YELLOW PLASTIC CAP STAMPED "JACOBS" SET, UNLESS OTHERWISE NOTED.
 - THE TOWN OR THE MUD, AS APPLICABLE, SHALL ISSUE NO PERMIT UNTIL THE COMPLETION OF ALL DEDICATED IMPROVEMENTS AND ACCEPTANCE OF SUCH IMPROVEMENTS ASSOCIATED WITH THE SUBDIVISION ARE APPROVED BY THE TOWN.
 - SHOULD THE ENTITY RESPONSIBLE FOR MAINTENANCE OF COMMON HELD PROPERTY FAIL TO PERFORM THE FUNCTION, THE TOWN HAS THE AUTHORITY TO PROVIDE APPROPRIATE MAINTENANCE AND REPAIR AND COLLECT APPROPRIATE FEES AND REIMBURSEMENTS.
 - LOT 1X, BLOCK J, OPEN SPACE IS A NON-BUILDABLE LOT FOR A HABITABLE STRUCTURE. IT IS PRIVATE AND WILL BE MAINTAINED BY THE HOMEOWNER'S ASSOCIATION.

- FLOOD ZONE DESIGNATION FROM FEDERAL EMERGENCY MANAGEMENT AGENCY FLOOD INSURANCE RATE MAP, COMMUNITY PANEL NO. 48121C0515 F, DATED MARCH 30, 1998.
- FOR LOTS SURROUNDING GAS WELLS, THE DISTANCE FROM WELLHEAD TO HABITABLE STRUCTURE SHALL BE A MINIMUM OF 200 FEET
- TO BUILD A HABITABLE STRUCTURE ON A LOT ADJACENT TO A GAS WELL, THE BUILDER MUST SUBMIT A SURVEY, SIGNED AND SEALED BY A LICENSED SURVEYOR, VERIFYING THE DISTANCE FROM THE NEAREST POINT OF THE HABITABLE STRUCTURE
- ZONE X: AREAS DETERMINED TO BE OUTSIDE 500-YEAR FLOOD PLAIN.
- ZONE AE: BASE FLOOD ELEVATIONS DETERMINED.

LEGEND

P.R.D.C.T.	PLAT RECORDS DENTON COUNTY, TEXAS
CMS	ALUMINUM DISC STAMPED "JACOBS ENGINEER GROUP, INC." SET
D.R.D.C.T.	DEED RECORDS DENTON COUNTY, TEXAS
CIRS	5/8" IRON ROD WITH YELLOW PLASTIC CAP STAMPED "JACOBS"
CIRF	IRON ROD FOUND WITH CAP
R.O.W.	RIGHT-OF-WAY
(CM)	CONTROLLING MONUMENT
(RM)	RECORDED MONUMENT
U.E.	UTILITY EASEMENT
C.O.E.	CORPS OF ENGINEERS
DE	DRAINAGE EASEMENT
WME	WALL MAINTENANCE EASEMENT



APPROXIMATE SURVEY LINE

M MEDLIN SURVEY ABSTRACT No. 832

A
FINAL PLAT
OF
THE HIGHLANDS AT TROPHY CLUB NEIGHBORHOOD 8 - PHASE 1
IN THE
R. ALLEN SURVEY, ABSTRACT NO. 5
TOWN OF TROPHY CLUB, DENTON COUNTY, TEXAS
74 RESIDENTIAL LOTS
1 OPEN SPACE LOT
20.175 ACRES

ALL LOTS ARE TYPE 5 LOTS
LOTS 1-19, BLOCK A
LOTS 1-22, BLOCK B
LOTS 1-13, BLOCK C
LOTS 1-6, BLOCK D
LOTS 1-14, BLOCK F
LOT 1X, BLOCK J OPEN SPACE

OWNER/DEVELOPER: LENNAR HOMES OF TEXAS LAND AND CONSTRUCTION, LTD 1707 MARKETPLACE BOULEVARD, SUITE 220 IRVING, TX 75063

ENGINEER/SURVEYOR: **JACOBS**
7950 ELMBROOK DRIVE DALLAS, TX 75247-4961
PHONE 214-638-0145 FAX 214-638-0447

SEPTEMBER 2010 SHEET 1 OF 2

Filed for Record in
Denton County
On Oct 14 2010 at 4:15P
As a
Plat
THE HIGHLANDS AT TROPHY CLUB
Doc Number 2010-183
No of Pages 2
Amount 100.00
Receipt Number - 731222
By
Dwaine Ritzmailler