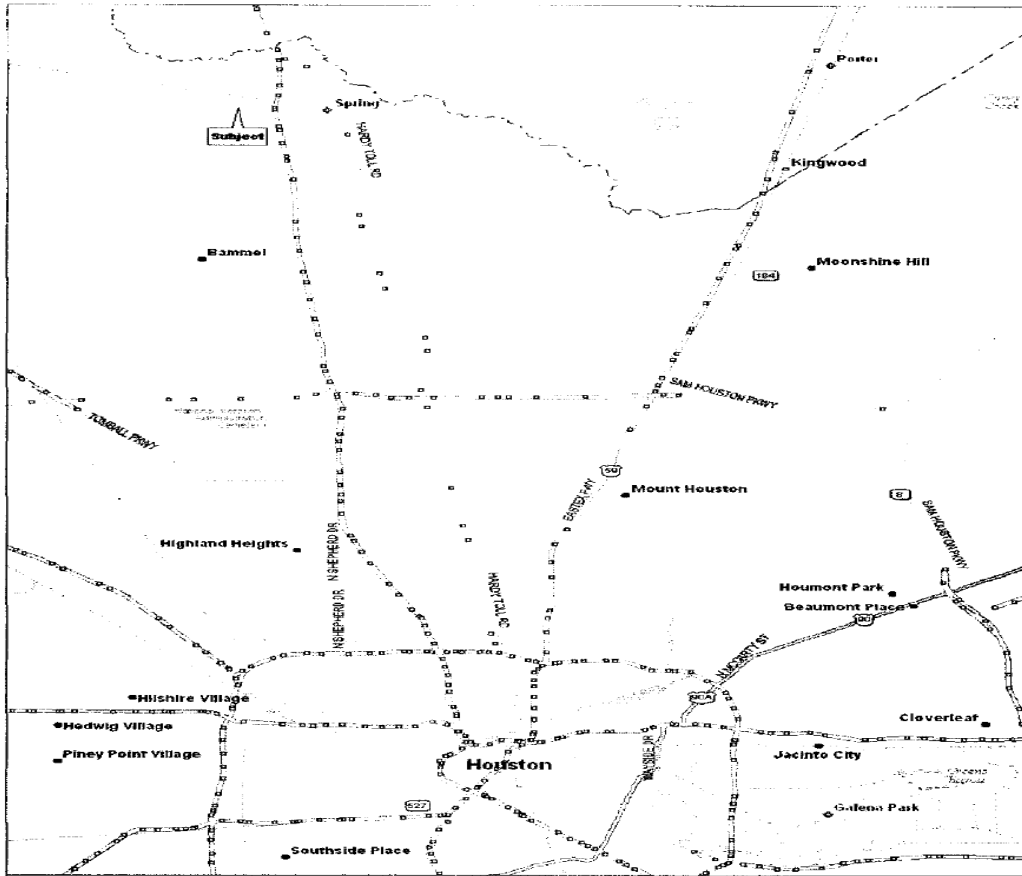


# SPRING STUEBNER

HARRIS COUNTY



## Spring Stuebner Harris County Houston, Texas

**Spring Stuebner** in Houston, **101-acres** tract located along the south line of Spring Stuebner Rd, just west of Interstate 45. This property is currently raw land with a preliminary land plan that would provide some 436 single family lots in the Spring School District.

For more information on Spring Stuebner, please contact [Steve Lenart](#) at 469.446.3544.

## **SPRING STUEBNER**

### **PROPERTY DESCRIPTION**

436-40' X 100' lots

### **PERMITTED USES**

Residential-Single Family

### **ZONING**

### **UTILITY PROVIDERS**

Water & Wastewater-Spring West (MUD)

Electric-Reliant, Entergy and others

Gas-Centerpoint Energy

Cable- Time Warner, AT&T and others

Telephone- AT&T

### **SCHOOL DISTRICT**

Spring ISD

### **ATTRACTIONS**

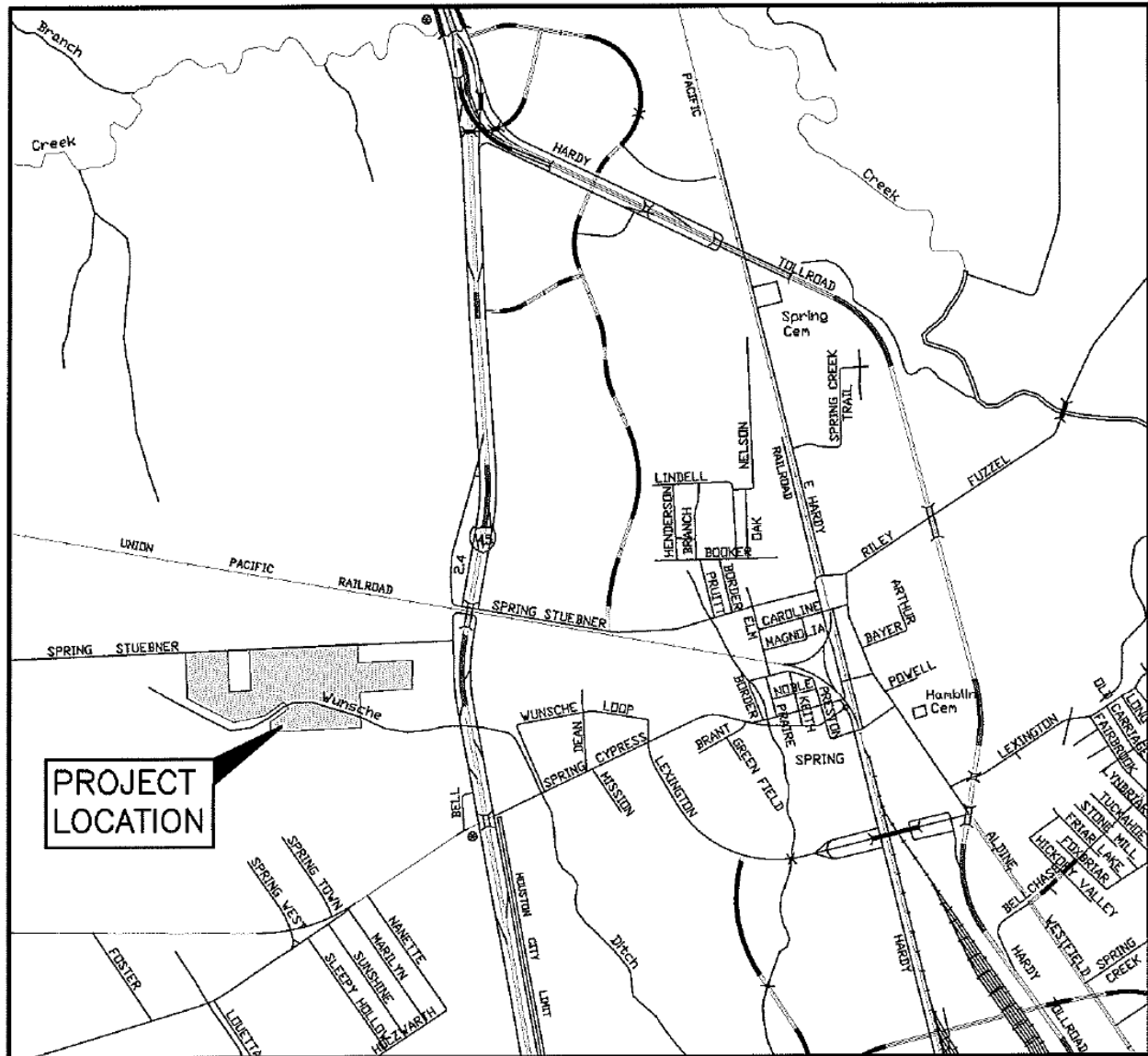
Woodlands Mall

Bush Intercontinental Airport

Sam Houston College

Lake Conroe

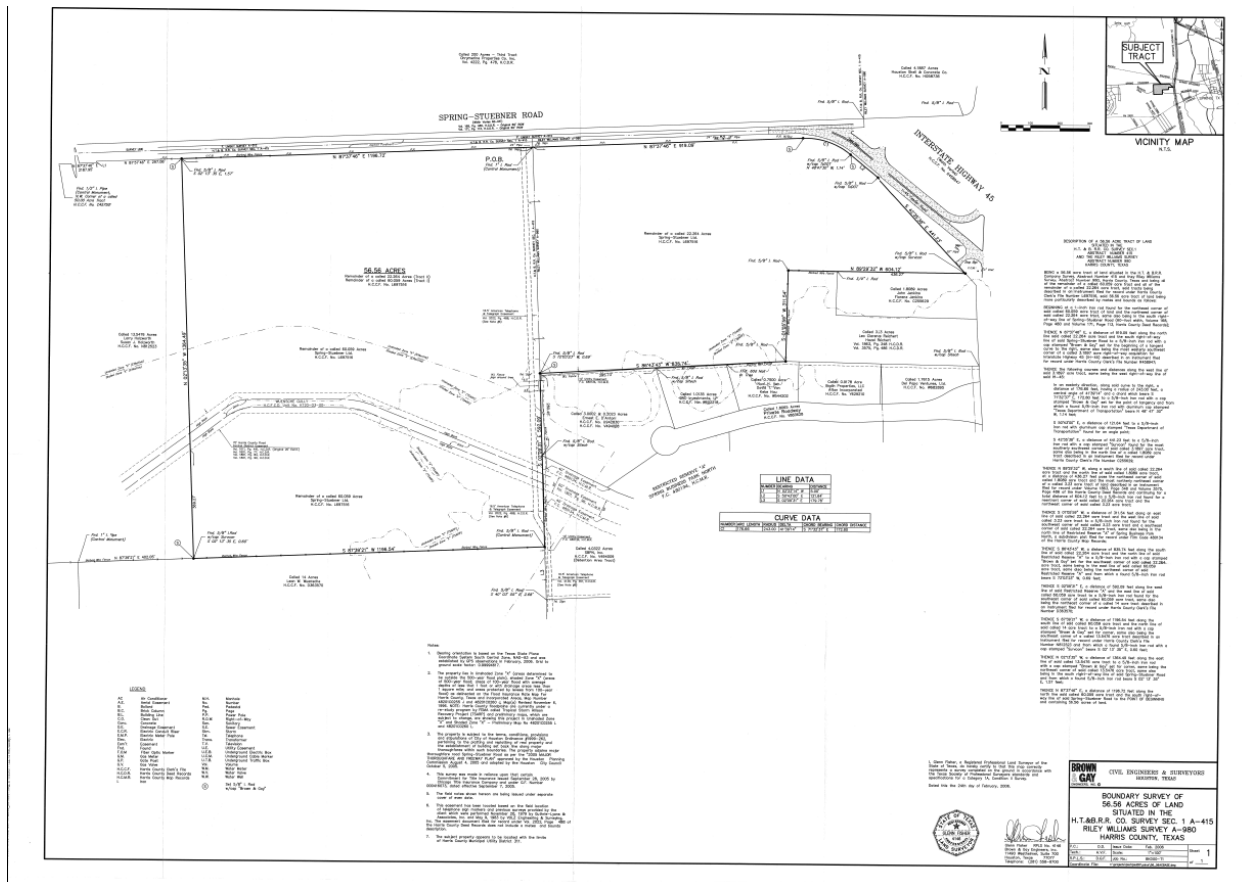
# SPRING STUEBNER



## SPRING STUEBNER ROAD, OBRA TRACT

### Spring Stuebner Project Location Map

# SPRING STUEBNER



**Spring Stuebner  
Boundary Survey Map**